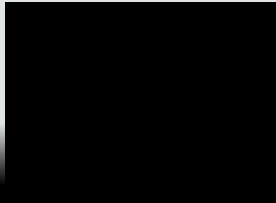


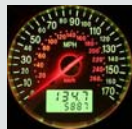
MasterMath

NUMBER SENSE

Rates



Unit Rates



	Amount/erving	%DV*	Amount/erving	%DV*
Total Fat 12g	18%	Sodium 940mg	39%	
Serv. Size 1 cup (245g)		Sat. Fat 6g	30%	Total Carb. 24g 8%
Servings About 2		Polyunsat. Fat 1.5g		Dietary Fiber 1g 4%
Calories 250		Monounsac. Fat 2.5g		Sugars 1g
Fat Cal. 110		Cholest. 60mg	20%	Protein 10g 20%
*Percent Daily Values are based on a diet of other people's secrets.		Vitamin A 0% • Vitamin C 0% • Calcium 0% • Iron 0%		

Rates

Unit Rates

Your family drives 150 miles in 3 hours. What was your average Miles Per Hour?

$$\frac{150 \text{ miles}}{3 \text{ hrs}} = \frac{50 \text{ miles}}{1 \text{ hr}} = 50 \text{ MPH}$$


Driving these 150 miles, your car burns 6 gallons of gas. What was your average miles per gallon?

$$\frac{150 \text{ miles}}{6 \text{ gal}} = \frac{25 \text{ miles}}{1 \text{ gal}} = 25 \text{ MPG}$$


Rates

You try it!
 Write a Unit Rate: \$44 in 8 hours

$$\frac{\$44}{8 \text{ hrs.}} = \frac{\$5.50}{1 \text{ hr.}}$$


Rates 

You try it!
 You have 2 summer job offers. At Fred's Farm, they'll pay you \$58 per 8 hour shift to pick tomatoes. At Rosey's Restaurant, they'll pay you \$6 per hour to wash dishes. Which job pays more per hour?

Rates 

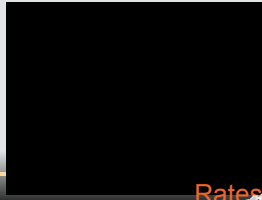
You try it!
 You have 2 summer job offers. At Fred's Farm, they'll pay you \$58 per 8 hour shift to pick tomatoes. At Rosey's Restaurant, they'll pay you \$6 per hour to wash dishes. Which job pays more per hour?

$$\frac{\$58}{8 \text{ hrs.}} = \frac{\$7.25}{1 \text{ hr.}}$$

Rates 

You try it!

You are driving to the camp grounds, which is 120 miles away. It's now 2PM, and you need to be there by 6PM, when the park office closes. What average speed do you need to maintain?



Rates 

You try it!

You are driving to the camp grounds, which is 120 miles away. It's now 2PM, and you need to be there by 6PM, when the park office closes. What average speed do you need to maintain?

$$\frac{120 \text{ miles}}{4 \text{ hrs}} = \frac{30 \text{ miles}}{1 \text{ hr}}$$

(Handwritten red annotations show division by 4: a curved arrow from 120 to 30 with $\div 4$ above it, and another from 4 to 1 with $\div 4$ below it.)

Rates 

You try it!

Now, try it on your own. Go to www.MasterMath.info download Rates from the Worksheets Page, and test your skill.

Rates 
